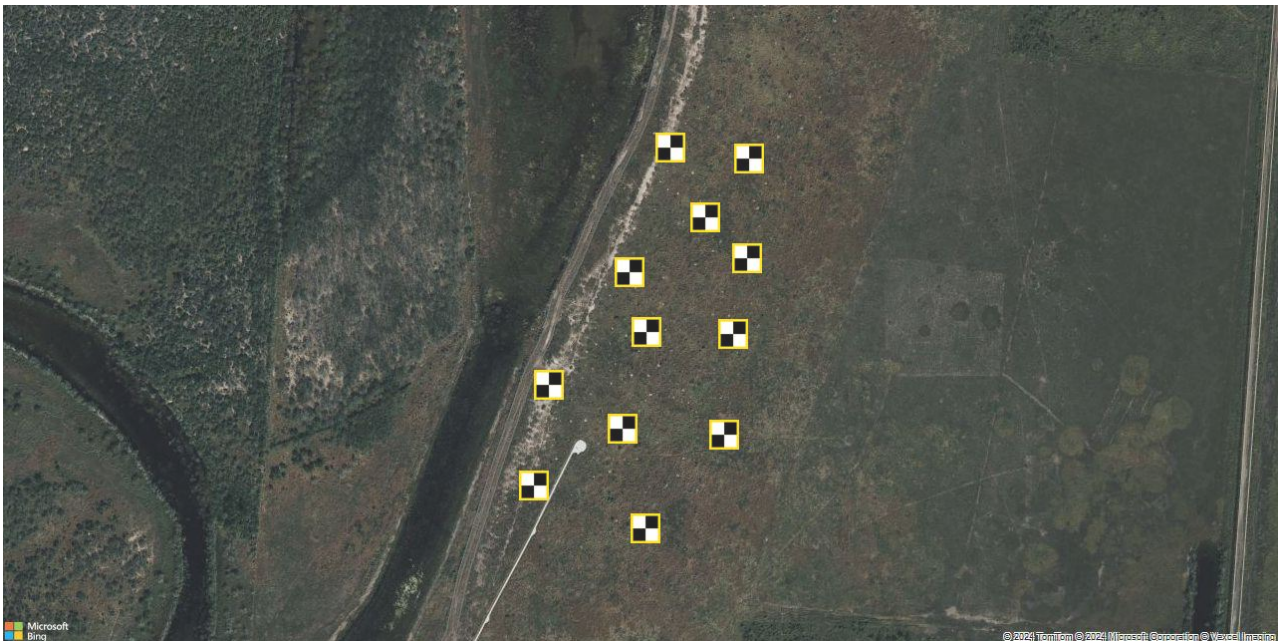




## Ground Control Report

Palo Alto NE - CORS



Survey ID ascf52294

Aeropoint Set

Date captured 27 Mar 2024 9:03 AM CDT

Points captured 12

Processing method Propeller network correction

Document generated 13 Jun 2024 4:11 PM CDT

Point 1



Point Number	1	Capture start	27 Mar 2024 9:03 AM CDT
Global ID	ac3784d73b	Capture end	27 Mar 2024 12:52 PM CDT
AeroPoint ID	2BA2A3FA	Duration	3:48
		Uploaded	27 Mar 2024 1:01 PM CDT

NAD83(2011)

Latitude	26.0265657° (26° 1' 35.63653" N)
Longitude	-97.47081075° (97° 28' 14.91869" W)
Ellipsoid height (NAD83(2011))	-16.03 m

NAD83(2011) / UTM zone 14N

Northing	2879521.943 m
Easting	653014.507 m

NAVD88 height

Height	5.9 m
--------	-------

Quality

Data points	2739
Points used	2601 (95.0%)
Baseline distance	0.09 km
Data variance	4.2 mm / 4.1 mm / 6.5 mm

Point 2



Point Number	2	Capture start	27 Mar 2024 9:07 AM CDT
Global ID	ac1a7a9de7	Capture end	27 Mar 2024 12:45 PM CDT
AeroPoint ID	B99DABB4	Duration	3:37
		Uploaded	27 Mar 2024 1:00 PM CDT

NAD83(2011)

Latitude	26.02478825° (26° 1' 29.23771" N)
Longitude	-97.47107404° (97° 28' 15.86656" W)
Ellipsoid height (NAD83(2011))	-16.28 m

NAD83(2011) / UTM zone 14N

Northing	2879324.749 m
Easting	652990.462 m

NAVD88 height

Height	5.648 m
--------	---------

Quality

Data points	2614
Points used	2568 (98.2%)
Baseline distance	0.22 km
Data variance	2.3 mm / 2.7 mm / 6.7 mm



Point 3



Point Number	3	Capture start	27 Mar 2024 9:11 AM CDT
Global ID	ac102c4e83	Capture end	27 Mar 2024 12:47 PM CDT
AeroPoint ID	E1E3DDD9	Duration	3:36
		Uploaded	27 Mar 2024 1:00 PM CDT

NAD83(2011)

Latitude	26.02645821° (26° 1' 35.24954" N)
Longitude	-97.46996424° (97° 28' 11.87126" W)
Ellipsoid height (NAD83(2011))	-16.501 m

NAD83(2011) / UTM zone 14N

Northing	2879511.029 m
Easting	653099.362 m

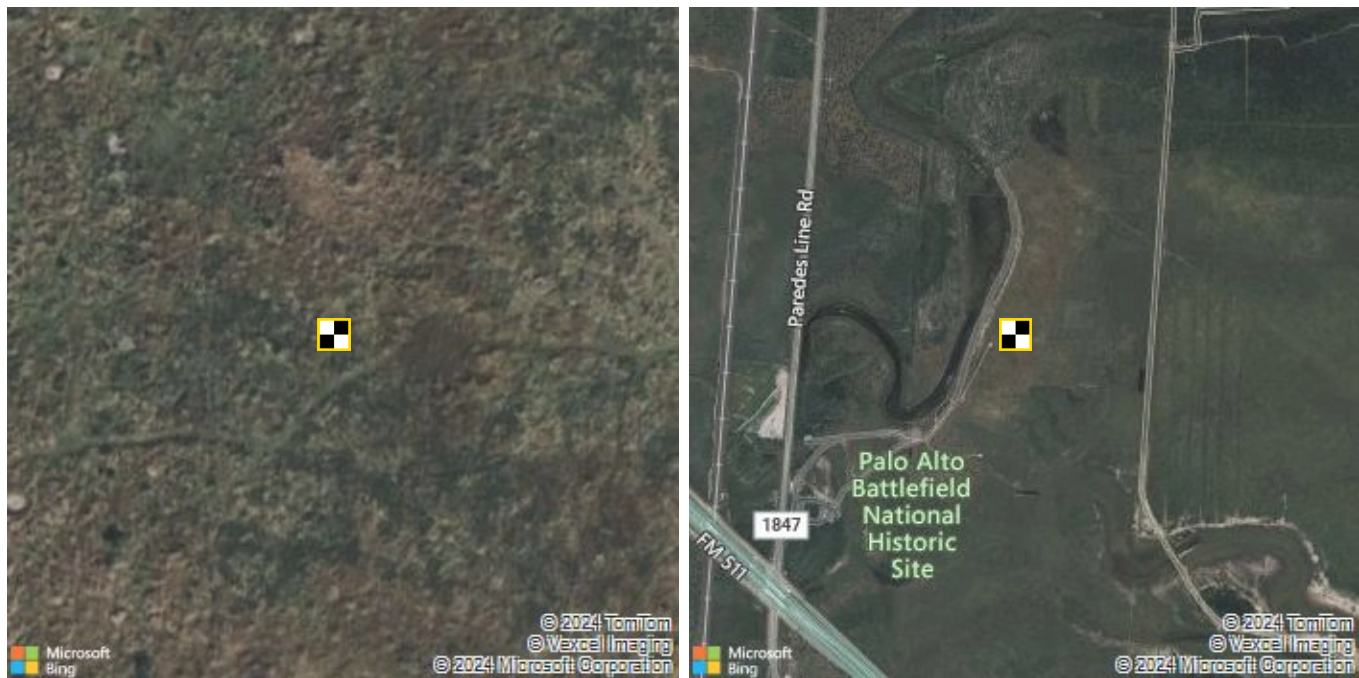
NAVD88 height

Height	5.426 m
--------	---------

Quality

Data points	2592
Points used	2566 (99.0%)
Baseline distance	27.93 km
Data variance	13.5 mm / 24.3 mm / 17.4 mm

Point 4



Point Number	4	Capture start	27 Mar 2024 9:14 AM CDT
Global ID	ac320ce4df	Capture end	27 Mar 2024 12:39 PM CDT
AeroPoint ID	9E3ED771	Duration	3:25
		Uploaded	27 Mar 2024 1:00 PM CDT

NAD83(2011)

Latitude	26.02379378° (26° 1' 25.65762" N)
Longitude	-97.47023123° (97° 28' 12.83245" W)
Ellipsoid height (NAD83(2011))	-16.804 m

NAD83(2011) / UTM zone 14N

Northing	2879215.581 m
Easting	653076.1 m

NAVD88 height

Height	5.12 m
--------	--------

Quality

Data points	2463
Points used	2463 (100.0%)
Baseline distance	0.30 km
Data variance	4.3 mm / 2.5 mm / 13.7 mm

Point 5



Point Number	5	Capture start	27 Mar 2024 9:19 AM CDT
Global ID	ac5cb2d7c0	Capture end	27 Mar 2024 12:39 PM CDT
AeroPoint ID	638CE531	Duration	3:20
		Uploaded	27 Mar 2024 1:00 PM CDT

NAD83(2011)

Latitude	26.02589216° (26° 1' 33.21177" N)
Longitude	-97.47043715° (97° 28' 13.57375" W)
Ellipsoid height (NAD83(2011))	-16.359 m

NAD83(2011) / UTM zone 14N

Northing	2879447.774 m
Easting	653052.769 m

NAVD88 height

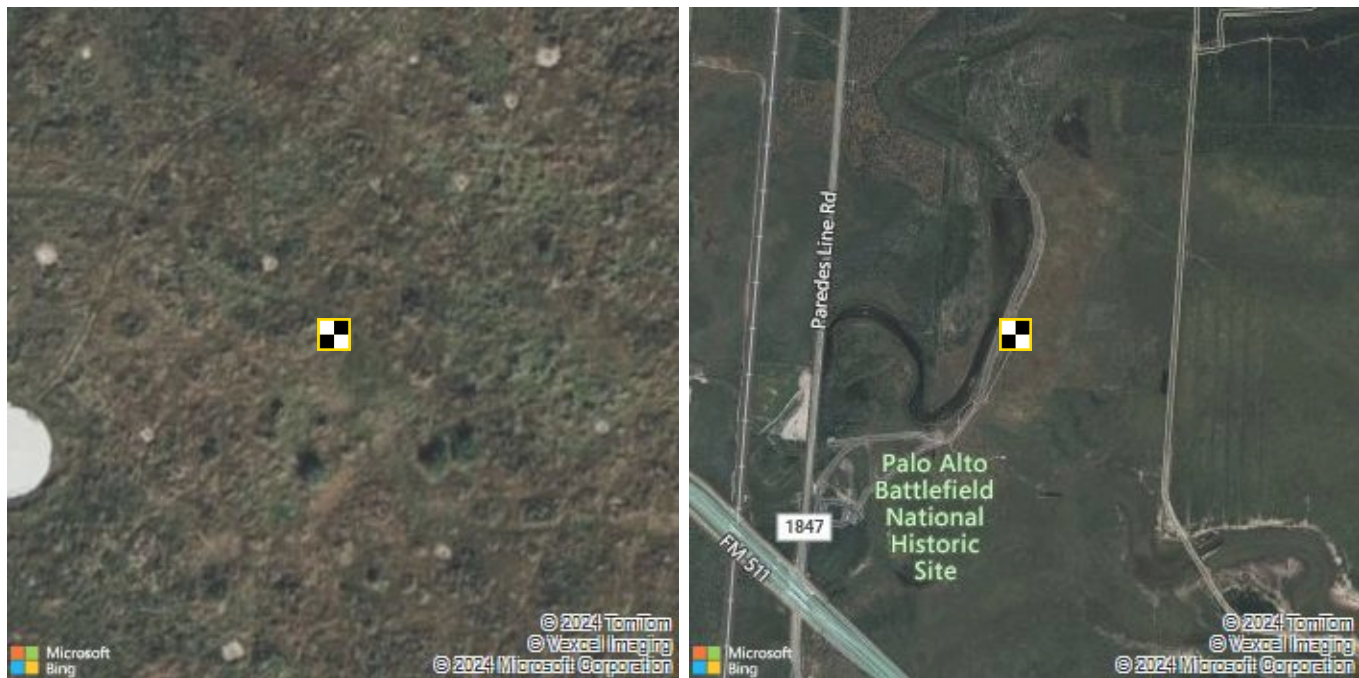
Height	5.569 m
--------	---------

Quality

Data points	2403
Points used	2403 (100.0%)
Baseline distance	0.08 km
Data variance	3.8 mm / 2.9 mm / 10.6 mm



Point 6



Point Number	6	Capture start	27 Mar 2024 9:21 AM CDT
Global ID	ac13ce0f56	Capture end	27 Mar 2024 12:34 PM CDT
AeroPoint ID	36EEFFEA	Duration	3:13
		Uploaded	27 Mar 2024 1:00 PM CDT

NAD83(2011)

Latitude	26.02385011° (26° 1' 25.86041" N)
Longitude	-97.47133037° (97° 28' 16.78932" W)
Ellipsoid height (NAD83(2011))	-16.315 m

NAD83(2011) / UTM zone 14N

Northing	2879220.533 m
Easting	652966.027 m

NAVD88 height

Height	5.612 m
--------	---------

Quality

Data points	2325
Points used	2325 (100.0%)
Baseline distance	0.32 km
Data variance	5.5 mm / 3.0 mm / 12.5 mm

Point 7



Point Number	7	Capture start	27 Mar 2024 9:25 AM CDT
Global ID	acba8031c8	Capture end	27 Mar 2024 12:35 PM CDT
AeroPoint ID	191B1DE6	Duration	3:09
		Uploaded	27 Mar 2024 1:01 PM CDT

NAD83(2011)

Latitude	26.02549609° (26° 1' 31.78591" N)
Longitude	-97.4699843° (97° 28' 11.94346" W)
Ellipsoid height (NAD83(2011))	-16.669 m

NAD83(2011) / UTM zone 14N

Northing	2879404.433 m
Easting	653098.604 m

NAVD88 height

Height	5.257 m
--------	---------

Quality

Data points	2279
Points used	2279 (100.0%)
Baseline distance	0.11 km
Data variance	4.6 mm / 2.3 mm / 10.2 mm



Point 8



Point Number	8	Capture start	27 Mar 2024 9:27 AM CDT
Global ID	ac25809841	Capture end	27 Mar 2024 12:30 PM CDT
AeroPoint ID	6F2125A1	Duration	3:02
		Uploaded	01 Apr 2024 10:09 AM CDT

NAD83(2011)

Latitude	26.02288144° (26° 1' 22.37317" N)
Longitude	-97.47107807° (97° 28' 15.88103" W)
Ellipsoid height (NAD83(2011))	-16.662 m

NAD83(2011) / UTM zone 14N

Northing	2879113.529 m
Easting	652992.534 m

NAVD88 height

Height	5.263 m
--------	---------

Quality

Data points	2188
Points used	2188 (100.0%)
Baseline distance	0.41 km
Data variance	6.4 mm / 3.3 mm / 11.6 mm

Point 9



Point Number	9	Capture start	27 Mar 2024 9:32 AM CDT
Global ID	ac627a8cb9	Capture end	27 Mar 2024 12:31 PM CDT
AeroPoint ID	E1AE15F5	Duration	2:58
		Uploaded	27 Mar 2024 1:00 PM CDT

NAD83(2011)

Latitude	26.02476428° (26° 1' 29.15139" N)
Longitude	-97.47013652° (97° 28' 12.49147" W)
Ellipsoid height (NAD83(2011))	-16.698 m

NAD83(2011) / UTM zone 14N

Northing	2879323.192 m
Easting	653084.32 m

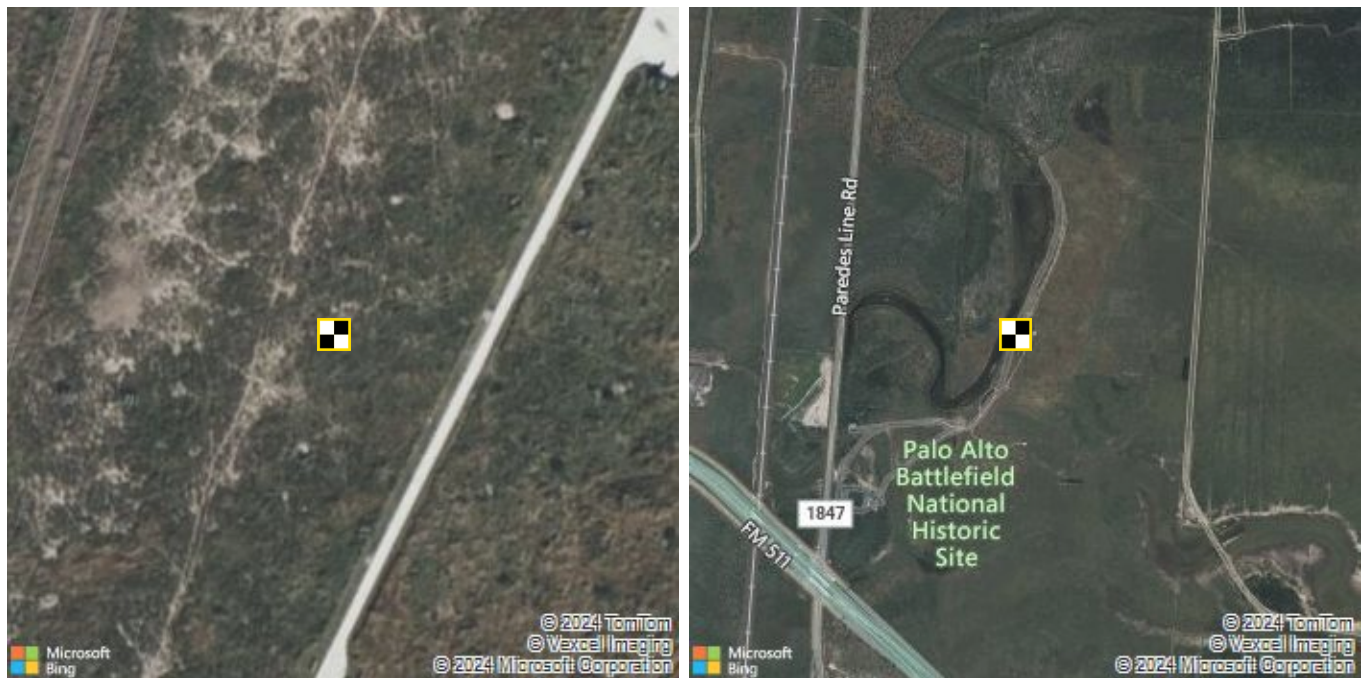
NAVD88 height

Height	5.228 m
--------	---------

Quality

Data points	2145
Points used	2145 (100.0%)
Baseline distance	0.19 km
Data variance	3.1 mm / 4.7 mm / 6.2 mm

Point 10



Point Number	10	Capture start	27 Mar 2024 9:35 AM CDT
Global ID	acb1e6618f	Capture end	27 Mar 2024 12:25 PM CDT
AeroPoint ID	D1C5E6BC	Duration	2:49
		Uploaded	27 Mar 2024 1:00 PM CDT

NAD83(2011)

Latitude	26.02329871° (26° 1' 23.87537" N)
Longitude	-97.47228673° (97° 28' 20.23223" W)
Ellipsoid height (NAD83(2011))	-16.342 m

NAD83(2011) / UTM zone 14N

Northing	2879158.334 m
Easting	652871.029 m

NAVD88 height

Height	5.587 m
--------	---------

Quality

Data points	2036
Points used	2036 (100.0%)
Baseline distance	0.42 km
Data variance	4.0 mm / 2.1 mm / 10.7 mm



Point 11



Point Number	11	Capture start	27 Mar 2024 9:39 AM CDT
Global ID	acb7c5a92f	Capture end	27 Mar 2024 12:23 PM CDT
AeroPoint ID	8D3CBEE6	Duration	2:44
		Uploaded	27 Mar 2024 1:02 PM CDT

NAD83(2011)

Latitude	26.02536164° (26° 1' 31.30192" N)
Longitude	-97.47124844° (97° 28' 16.49437" W)
Ellipsoid height (NAD83(2011))	-16.065 m

NAD83(2011) / UTM zone 14N

Northing	2879388.058 m
Easting	652972.266 m

NAVD88 height

Height	5.865 m
--------	---------

Quality

Data points	1970
Points used	1970 (100.0%)
Baseline distance	0.18 km
Data variance	3.6 mm / 3.2 mm / 13.5 mm

Point 12



Point Number	12	Capture start	27 Mar 2024 9:41 AM CDT
Global ID	ace601cedb	Capture end	27 Mar 2024 12:20 PM CDT
AeroPoint ID	6DCE4FEE	Duration	2:39
		Uploaded	27 Mar 2024 1:00 PM CDT

NAD83(2011)

Latitude	26.02427832° (26° 1' 27.40194" N)
Longitude	-97.47211701° (97° 28' 19.62125" W)
Ellipsoid height (NAD83(2011))	-16.29 m

NAD83(2011) / UTM zone 14N

Northing	2879267.043 m
Easting	652886.745 m

NAVD88 height

Height	5.64 m
--------	--------

Quality

Data points	1911
Points used	1911 (100.0%)
Baseline distance	0.32 km
Data variance	4.4 mm / 3.1 mm / 10.9 mm